

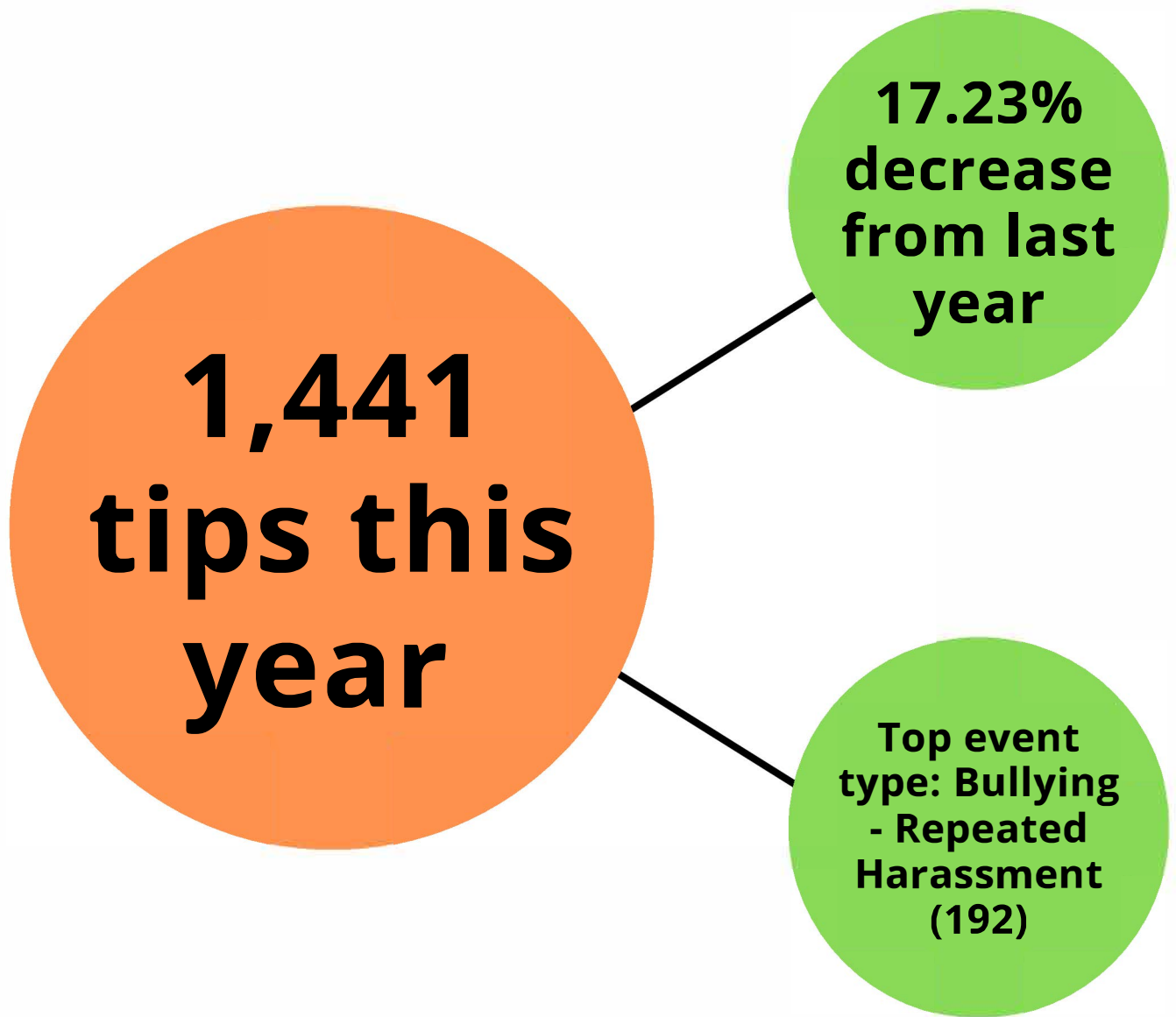
A photograph of a student from behind, wearing a green backpack and holding a smartphone, standing in a school hallway. The image is semi-transparent, serving as a background for the top half of the page.

2025

ANNUAL REPORT

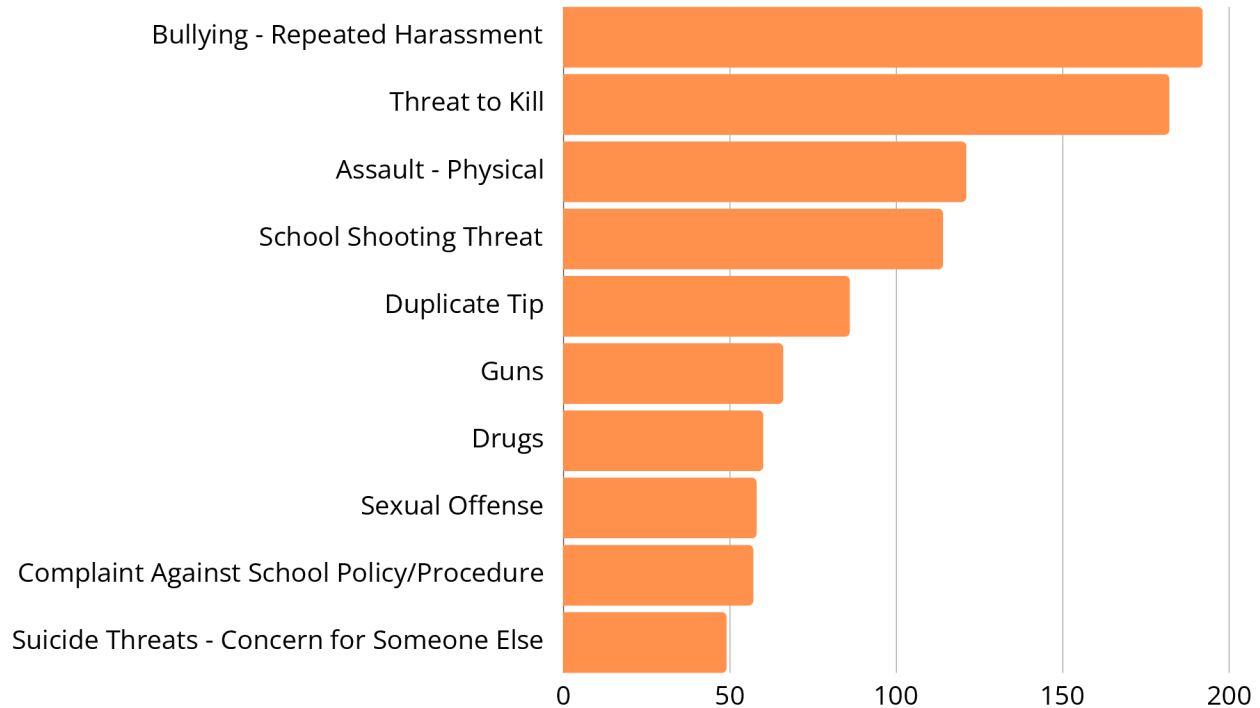
COURAGE  **REPORT**

PREVENT SCHOOL VIOLENCE



The Courage2Report program experienced a decline in tip submissions from 2024 to 2025. This decrease may be partly attributed to the unusually high volume of tips submitted in response to the tragic school shooting at Apalachee High School in Georgia in September 2024. Although we saw a reduction in tips in 2025, the total still reflects significant progress to long-term goals of increasing awareness of - and confidence in - the Courage2Report system. When the program was launched in 2019, it received only 429 tips, demonstrating how much awareness and engagement have grown over time.

TOP 10 EVENT TYPES FOR 2025



*Duplicate tips occur when multiple individuals report the same incident. These instances suggest a healthy reporting culture within the school community.

DISPOSITION REPORTING INCLUDED THESE SAFETY CHECKS:

249

**Parent contacted
by school**

194

**Student check-in
completed by school**

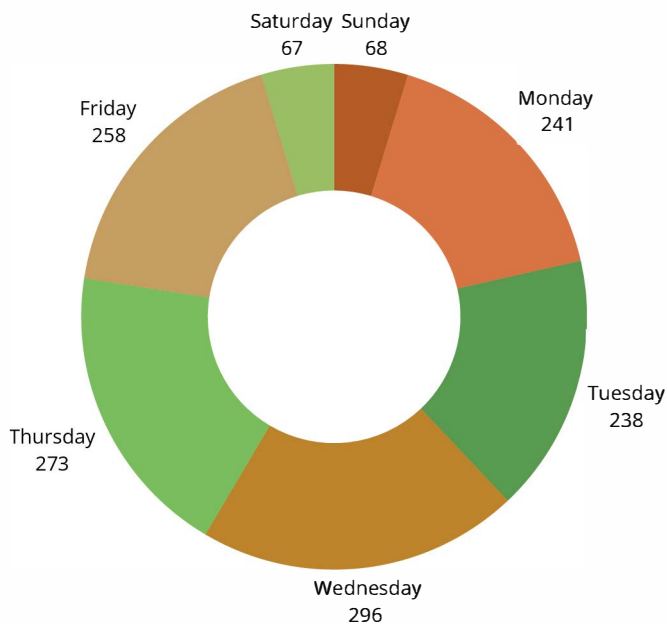
123

**School based supports
to be provided**

94

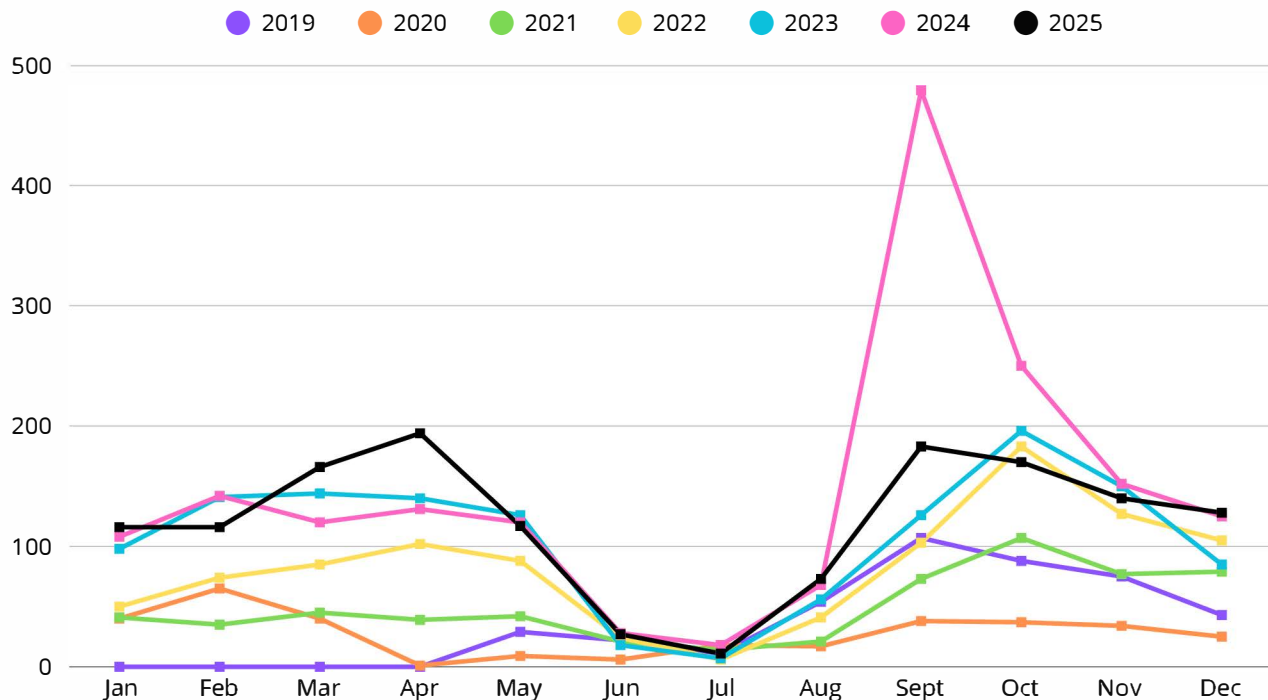
**Law enforcement
investigation initiated**

While follow-up on tips is not required, we continue to receive timely dispositions. In 2025, a total of 1,376 tips were closed out, indicating that Courage2Report received dispositions from the respective schools or law enforcement agency. Additionally, 93 tips were sent for informational purposes which could include duplicate reports or tips submitted by school administration or law enforcement officers.

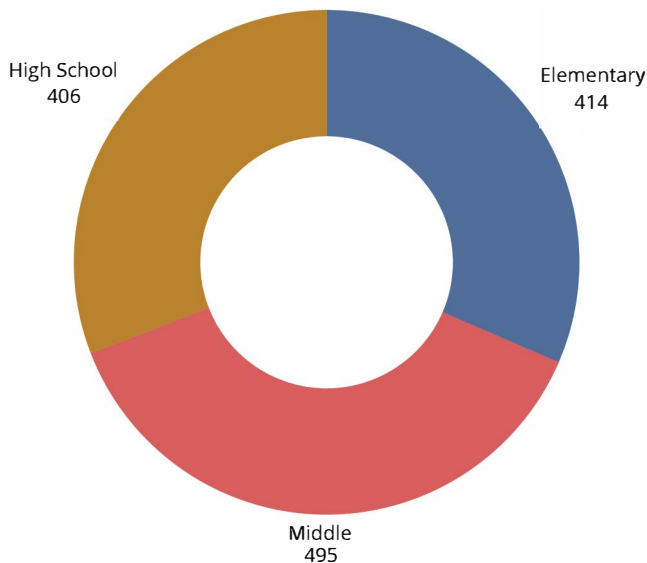


In 2025, reporting activity showed several clear patterns. Wednesday emerged as the busiest day of the week, generating 296 tips - more than any other day. Tip volume was concentrated between the hours of 8 AM and 5 PM, suggesting that users tend to engage with the system while in structured environments such as school or work. When looking at how individuals chose to submit tips, desktop access remained the dominant method. The PC web browser (599) was the most frequently used platform. This was followed by the mobile web browser (430), indicating strong engagement from users on the go. Phone calls (308) continued to play a significant role, while the mobile app (57) and text (47) served as additional, though less commonly used, avenues for reporting.

GROWTH OF C2R SINCE 2019

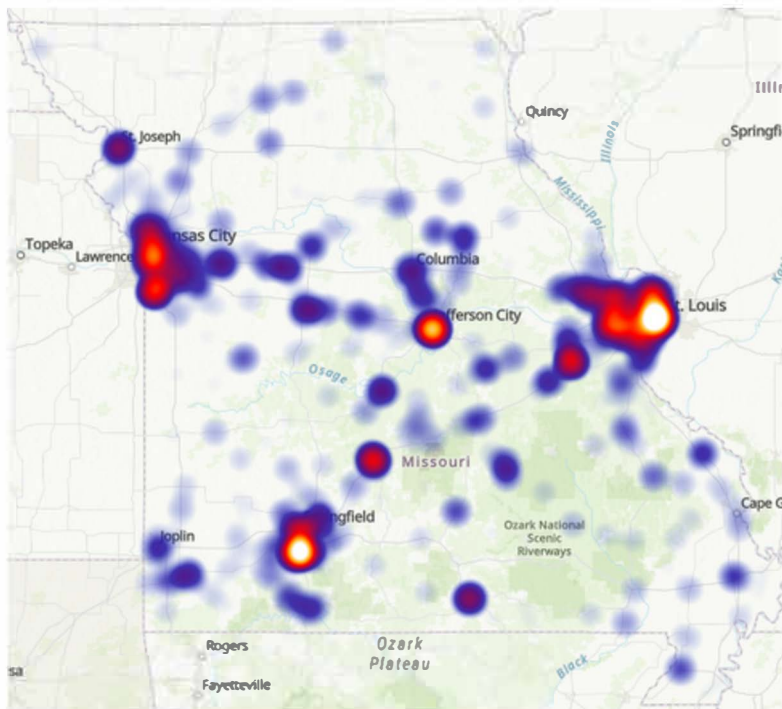


TIPS BY AGE GROUP



In relation to age, the tips received in 2025 among victims, witnesses, and aggressors identified in tips was fairly consistent across grade levels, with 406 tips involving high school students, 495 involving middle school students, and 414 involved elementary students. This balanced spread highlights an important trend: even the youngest students in PK-5 are encountering situations that warrant reporting. It reinforces the need for early, age-appropriate education on what Courage2Report is, how it works, and the types of concern students can safely share through the program.

2025 HEAT MAP



The 2025 heat map of tips shows a clear picture of where tip activity is strongest and where untapped potential remains. As expected the bulk of tips comes from some of the metro areas - St. Louis, Kansas City, Springfield, and Jefferson City.

What stands out just as clearly are the areas with little to no tips. Large portions of Northern Missouri and Southeast Missouri show noticeably lighter activity. By using this map as a guide, we can shape our 2026 strategy around expanding into these under-engaged areas and strengthening relationship. This shift will not only broaden our geographic reach but also helps ensure a more balanced statewide distribution of tips.

IMPLICATIONS

The Courage2Report statistics for 2025 reflect a broader national decline in violence in both 2024 and 2025. This trend is consistent with the national crime data showing violent offenses - including homicide, aggravated assaults, and gun assaults - fell significantly across major U.S. cities in 2025. According to the Council on Criminal Justice (CCJ), 11 of the 13 major offenses tracked declines in 2025. These reductions brought violent crime levels back to, or below, pre-pandemic baselines in many cities. Researchers suggest several contributing factors, including increased time spent alone among 15-29-year-olds since 2020 and national decline in alcohol use - both of which reduce opportunities for conflict.

This national pattern is mirrored in school environments. Data from the K-12 School Shooting Database shows school shooting incidents dropped to 233 incidents in 2025, compared to 336 in 2024 and 352 in 2023. The 2024-2025 school year saw a 22.5% decrease in school shootings compared to the previous school year, breaking a three-year period of record highs. While this decline is encouraging, experts caution the total number incidents remain more than double pre-pandemic levels, stressing the need for continued vigilance.

Importantly, school safety experts emphasize these decreases should not lead to a reduction in safety protocols or preparedness. Research consistently shows school attackers often display observable warning behaviors - such as social withdrawal, signs of crisis, or escalating distress - in the days, weeks, or months leading up to an attack. Both K-12 Dive reports highlight schools are improving in areas such as collaboration with law enforcement, mental health supports, and threat assessment practices.

These findings reinforce the critical importance of behavioral threat assessment and early-intervention systems. **A key component of effective threat assessment is ensuring students, staff, and community members have a trusted, accessible way to report concerning behavior.** In many past school attacks, someone had information that could have prompted intervention by either school administration or law enforcement but did not know where or how to share the information. Courage2Report directly addresses this gap by providing a centralized reporting mechanism that empowers individuals to speak up when they notice troubling changes. Every tip is simultaneously shared with both the school administration and local law enforcement. This early-alert and dual-notification process strengthens collaboration, speeds up coordinated responses, and gives schools and law enforcement the opportunity to intervene before a situation escalates.

As overall violence declines nationwide, maintaining strong reporting systems and evidence-based safety practices remains essential to sustaining progress and protecting school communities.

Arundel, Kara. (2026). School shootings dropped in 2025. Here's what to know for 2026. K-12 Dive. <https://www.k12dive.com/news/school-shootings-2025-school-safety-what-to-know-in-2026/808946/>

Lopez, E., & Boxerman, B. (2025). Crime trends in U.S. cities: Year-end 2025 update. Council on Criminal Justice. <https://counciloncj.org/crime-trends-in-u-s-cities-year-end-2025-update/>

Modan, Naaz. (2025). After 3-consecutive-year high, school shootings drop 23% in 2024-25. K-12 Dive. <https://www.k12dive.com/news/school-shootings-2024-25-school-year-decrease-gun-violence/752853/>

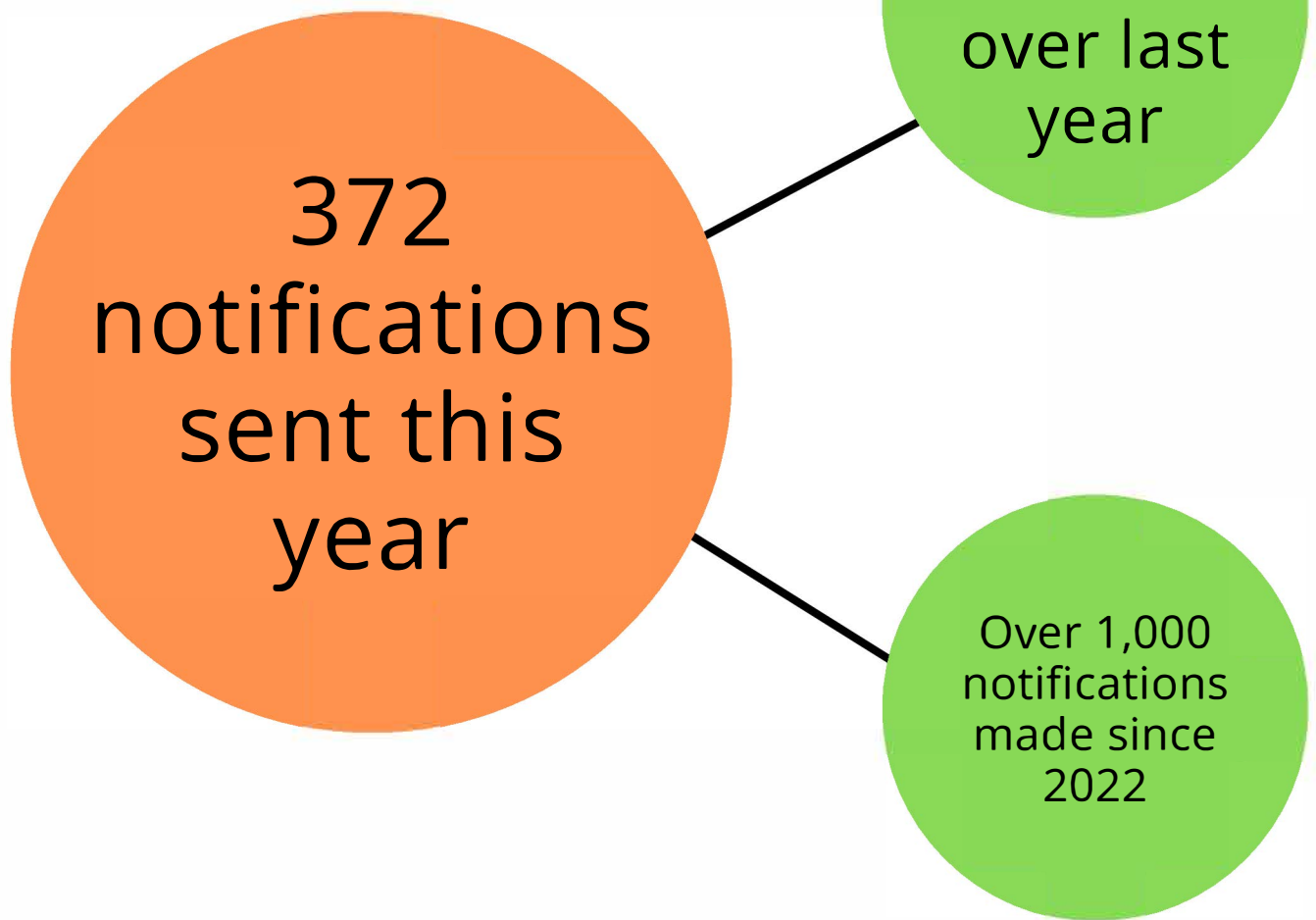
National Threat Assessment Center. (2021). Averting Targeted School Violence. <https://www.secretservice.gov/media/1020/download?inline=true>

Riedman, David (2025). K-12 School Shooting Database. <https://k12ssdb.org/all-shootings>



HANDLE WITH CARE MISSOURI

PROTECT • HEAL • THRIVE



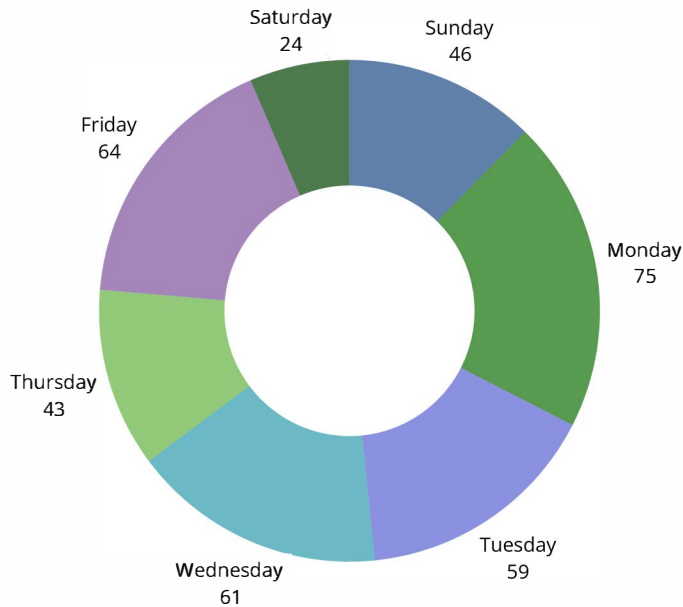
The Handle With Care program launched in September 2022 and expanded to a statewide initiative by September 2024. In 2025 alone, the program received 372 notifications, contributing to a significant milestone of more than 1,000 total notifications sent from law enforcement to schools since its inception. These notifications alert school administration when a student has recently experienced a potentially traumatic event involving a law enforcement response, enabling schools to provide timely, trauma-informed support and interventions when needed.



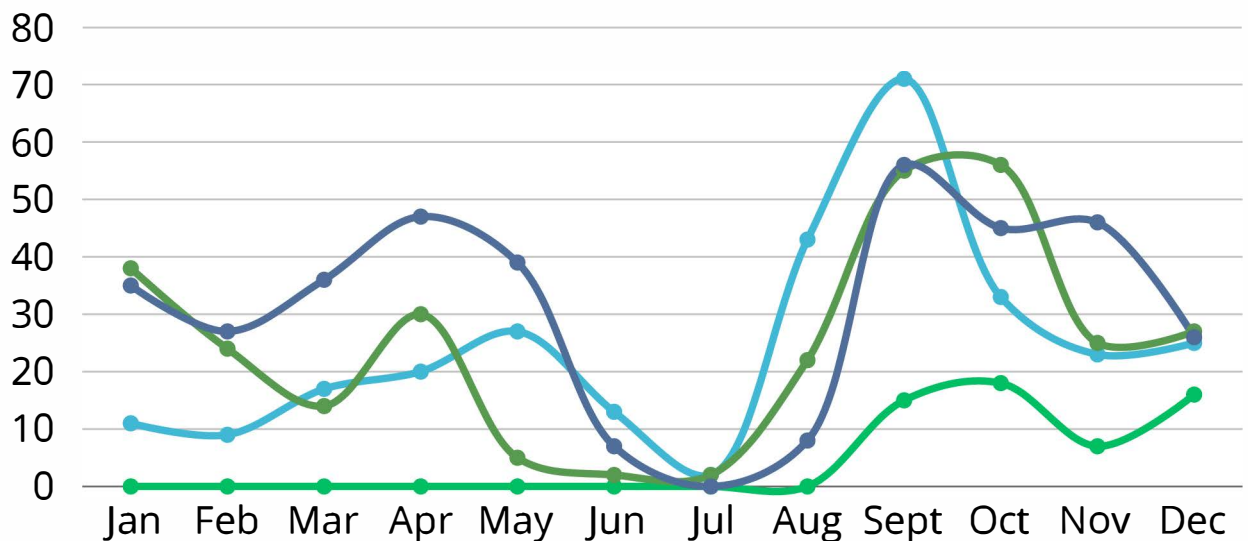
HANDLE WITH CARE MISSOURI

PROTECT • HEAL • THRIVE

In 2025, the highest number of Handle With Care notifications were issued on Mondays with 75. As the first day of the school week, this trend suggests many students may be beginning their week already carrying the weight of a traumatic experience from the weekend. Compounding this, a large share of notifications were received between 7 PM and 7 AM, indicating that these incidents often occur overnight - when students have limited support and when schools are unaware of what a child may be facing. When trauma happens during late evening or early morning hours, students may come to school tired, overwhelmed, or acting out. The Handle With Care system ensures those in contact with the student are aware that something occurred - without sharing specific details - so they can respond with added understanding and trauma-informed support.

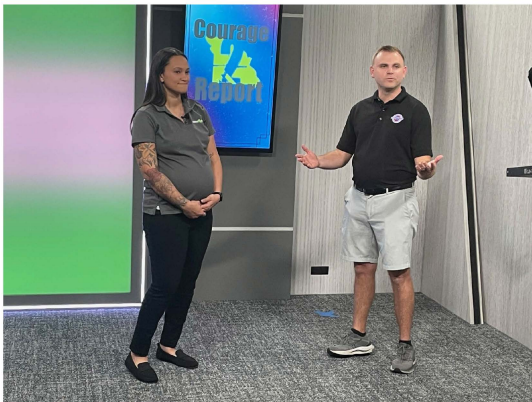


GROWTH OF HWC SINCE 2022



2025 EVENTS

In 2025, Courage2Report maintained a strong presence across the state, participating in 38 outreach events. Staff delivered presentations at 18 of those engagements, helping deepen the understanding of the program and its impact. Throughout the year, an estimated 3,290 individuals received information about Courage2Report, including 928 school staff, administrators, and SROs, 1,715 community member, and 687 students. The broad reach reflects ongoing efforts to strengthen awareness, build partnerships, and ensure all stakeholders understand how to use the program effectively.



If you have an event planned for 2026 or would like to schedule a presentation or training, please email [this completed form](#) to us at courage2reportmo.com